

Your physician has referred you for a PET examination, a diagnostic procedure designed to reveal a wealth of information for use by your physician.

He, or she, will tell you as much as you'd like to know about this important technology.

In the meantime, allow us to answer some of your questions about the PET exam.

Thank You For Choosing WCA

Quality Care

Caring and compassionate staff

Board Certified Radiologists

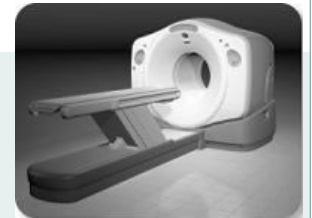
Convenient and close to home

Atmosphere is comfortable

State-of-the-art equipment



PO Box 840
Jamestown, NY 14702-0840
www.wcahospital.org



Your PET/CT is scheduled for:

DATE: _____

TIME: _____

**If you have any questions
about your PET/CT scan,
please call 1-866-235-7226
Monday-Friday 8:00am-5:00pm**

What is PET/CT?

PET/CT (positron emission tomography/computed tomography) is a combination of functional imaging (PET) combined with anatomic localization (CT). A very small amount of radioactive glucose (sugar) will be injected into you. The radioactive injection will be absorbed into cells that are growing and dividing rapidly like areas of infection or cancer, faster than normal cells. After the injection is absorbed, the PET and CT images are taken so the Radiologist can see where the injection may have highlighted areas within the body.

Why do I need this exam?

The PET aspect of this test provides images of how the body is functioning and may therefore show certain diseases at an earlier stage.

What happens once I get there?

After reviewing your history and any prior exams with the staff, you will have your blood sugar levels checked. The pre-scan instructions are designed to have your blood *sugar levels at proper levels. As soon as they are verified, you will have an IV started in your arm* and a small amount of the radioactive sugar, FDG, will be injected. As soon as you have been injected, you will be asked to rest for approximately 45-60 minutes for your body to absorb the sugar. It is recommended that you rest as quietly as possible to ensure the highest quality pictures.

What will the scan be like?

You will lie on a table that moves very slowly through a machine that resembles a CAT scan unit. The PET unit takes images of the sugar and acts much like your personal camera. It doesn't make much noise and may not even sound like it is working, but it is.

What happens after the exam?

You may leave as soon as the scan is complete. Unless you received special instructions, you'll be able to eat and drink immediately. In fact, drinking lots of fluids will help remove the radioactivity that may be in your system. In the meantime, we will begin to prepare the results for review by our Radiologist who will send a report to your physician.

SPECIAL INSTRUCTIONS

- Do not eat or drink anything more than water for 6 hours before your exam because it may interfere with the results.
- Do not chew gum
- Avoid caffeine and nicotine for 4 hours before your exam
- If you take medications, drink only plain water
- If you are diabetic, let us know ahead of time so we can work with your physician to determine the safest possible way for you to prepare for your exam
- If you feel feverish, please call this to our attention

For additional questions or concerns, please contact your doctor or call us at
1-866-235-7226.

To schedule a PET/CT scan, please call
1-866-235-7226

Are there risks associated with PET/CT?

A PET/CT study is very similar to many other diagnostic tests you have had. There will be a very small increase in the amount of radiation exposure from a CAT scan alone and drinking as many fluids as you can will reduce that even further.

Radioactive sugar used in PET does not remain in your system for very long so there is no reason to avoid interacting with people once you've left. To be extra safe, wait a few hours before getting too close to an infant or anyone who is pregnant.

Why do I need this exam?

The PET aspect of this test provides images of how the body is functioning and may therefore show certain diseases at an earlier stage.

Where we are located

From Foote Avenue, headed north, turn right onto Allen Street toward the Heliport.

Pass the heliport and turn right into parking lot for the Medical Office Building.

Park in the YELLOW parking lot near the main entrance of the Medical office Building.

This is the same building where MRI, Mammography, Ultrasound and the lab are found.

Enter into the building and turn right into the waiting room.

The receptionist will let our staff know that you have arrived.